

POMPONIO TERRACE METROPOLITAN DISTRICT

191 University Blvd.
#358
Denver, Colorado 80206
303-818-9365
angela@teleos-services.com

December 20, 2022

Division of Local Government
1313 Sherman Street, Room 521
Denver, Colorado

[DLG E-Filing Portal](#)

Adams County Assessor
4430 S. Adams County Parkway
Suite C2100
Brighton, CO 80601

assessor@adcogov.org

Adams County Clerk and Recorder
4430 S. Adams County Parkway
Suite C2100
Brighton, CO 80601

RE: Boundary Map – POMPONIO TERRACE METROPOLITAN DISTRICT- LGID
66770

To Whom it May Concern:

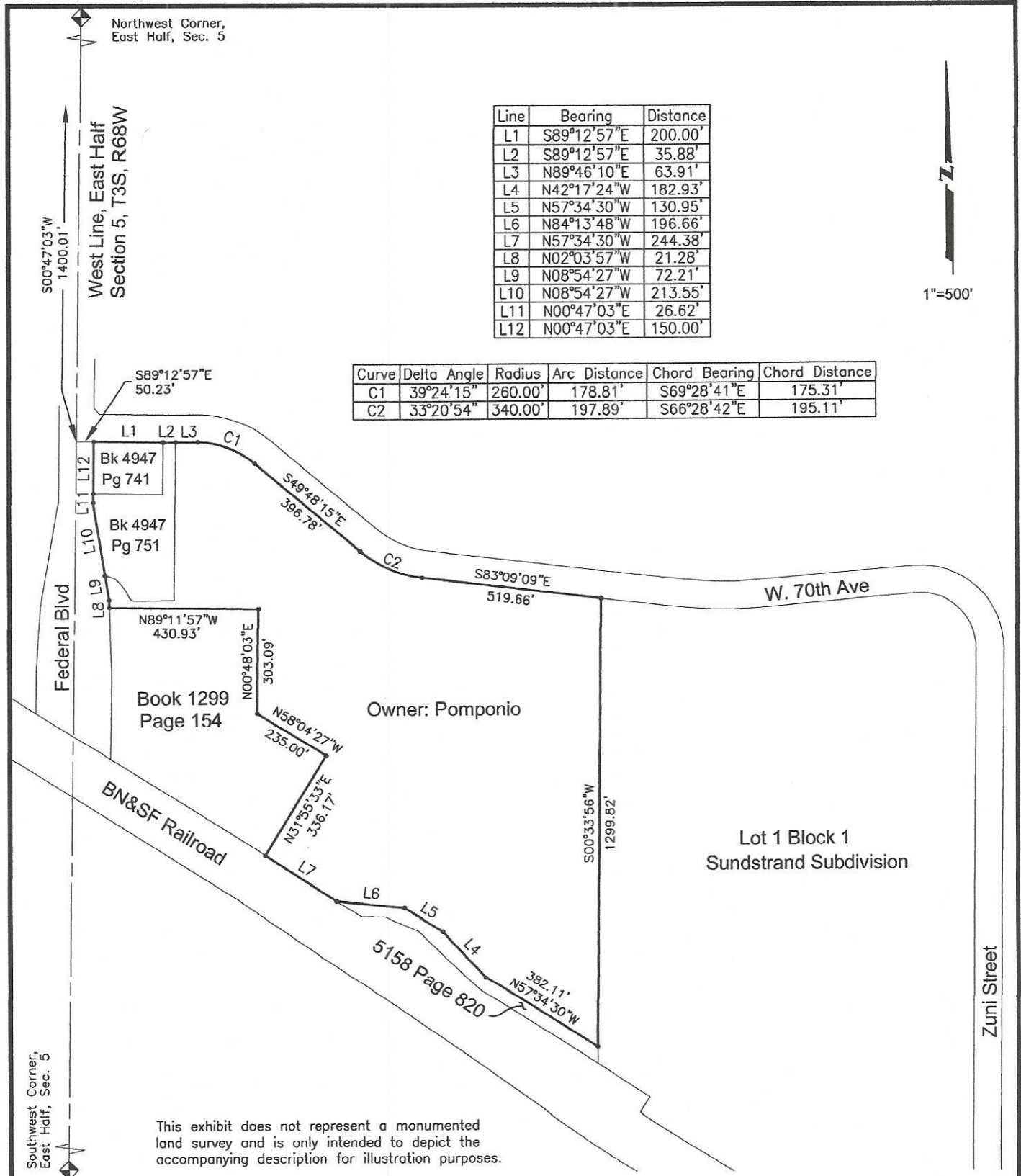
In accordance with Section 32-1-306, C.R.S., our office is notifying you that the boundaries of Pomponio Terrace Metropolitan District did not change during 2022, and the map showing the current boundaries of the District is on file with your office.

If I can be of further assistance, please feel free to contact our office.

Sincerely,

/s/
Angela Elliott
District Manager

ILLUSTRATION FOR EXHIBIT A



Line	Bearing	Distance
L1	S89°12'57"E	200.00'
L2	S89°12'57"E	35.88'
L3	N89°46'10"E	63.91'
L4	N42°17'24"W	182.93'
L5	N57°34'30"W	130.95'
L6	N84°13'48"W	196.66'
L7	N57°34'30"W	244.38'
L8	N02°03'57"W	21.28'
L9	N08°54'27"W	72.21'
L10	N08°54'27"W	213.55'
L11	N00°47'03"E	26.62'
L12	N00°47'03"E	150.00'

Curve	Delta Angle	Radius	Arc Distance	Chord Bearing	Chord Distance
C1	39°24'15"	260.00'	178.81'	S69°28'41"E	175.31'
C2	33°20'54"	340.00'	197.89'	S66°28'42"E	195.11'

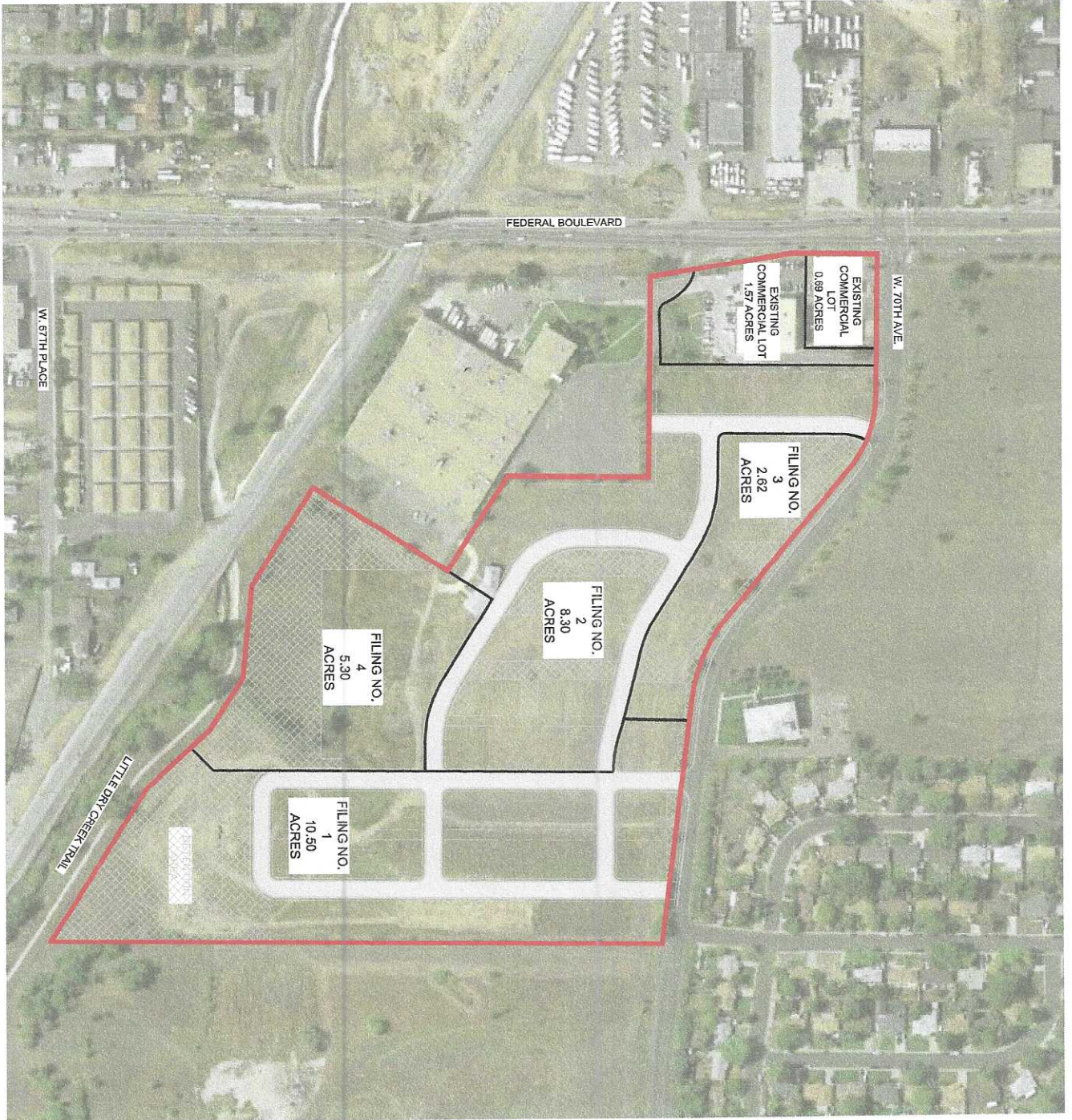
This exhibit does not represent a monumented land survey and is only intended to depict the accompanying description for illustration purposes.

J:\Project #s\2016\Jobs\2016004.2-Pomponio Terraces-Metro District Set Plan\2016004.2-CAD\2016004.2-Service Plan.dwg, Sheet 1, 1/13/2016 1:08:08 PM, Illudeman

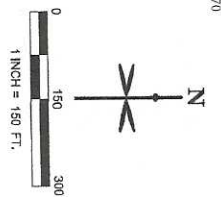
FWS FORESIGHT WEST SURVEYING INC.
 4955 Iris Street, Wheat Ridge, CO 80033
 (303) 504-4440

DISTRICT EXHIBIT
 East 1/2 Sec. 5, T3S, R68W
 Adams County, Colorado



Compiled by: LJL
 Date: 13 Jan '16
 Page: 1 of 1



1631D# 66770



LEGEND

-  SERVICE AREA BOUNDARY/FU INCLUSION ARI
-  FILING BOUND/
-  DEVELOPMENT USED FOR COM MAIN ACCESS
-  DEVELOPMENT USED FOR OPE SPACE